

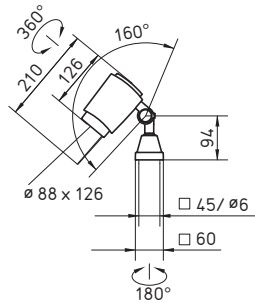
HSW 20

SPOT LIGHTING: THIS IS WHAT EXCELLENT LIGHT LOOKS LIKE.



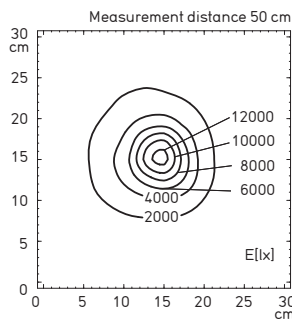
Irrespective of whether there is a narrow or a wide beam characteristic: If an excellent spot light is needed in the machine, the HSW 20 is the right choice. For a halogen luminaire it remains incredibly cool and easy to handle. No burning in of cooling agents.

- Brilliant halogen light
- Glare-free thanks to metal louver
- Variants with narrow and wide angles of illumination
- Easy changing of illuminant
- Low temperatures in the beam direction thanks to twin glass screen
- High system of protection

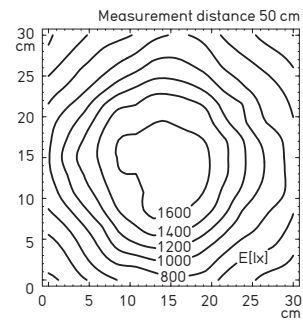


Features at a glance

- Halogen lamp
- Color temperature warm white 2,800 K (23 W) or 3,100 K (20 W)
- Glare-free thanks to metal louver, angle of illumination 10° or 36°
- Luminaire head of special black plastic, twin glass screen
- Head joint for individual adjustments
- Without switch
- System of protection IP65; class of protection I
- Supplied with 1.5 m mains lead with free stranded wires
- Various fastenings and transformers to connect to the mains voltage as an accessory



Illuminance with 10° angle of illumination (order no: 112 081 000)



Illuminance with 36° angle of illumination (order no: 112 081 012)

Integrated machine luminaires



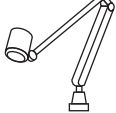
Surface-mounted luminaires



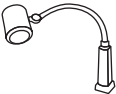
Tube luminaires



Arm-mounted luminaires



Flexible-tube luminaires



Pivoting-head luminaires



FITTED WITH	OPERATING DEVICE	CONNECTED LOAD	SPECIAL FEATURE	E_m / E_{max}^*	MODEL	ORDER NO.
1 x 23 W	–	24 VAC/DC	10° angle of illumination	1568/14550 lx ¹	HSWK 20	112 081 010 - 000 781 98
1 x 20 W	–	12 VAC/DC	10° angle of illumination	1295/12740 lx ¹	HSWK 20	112 081 000 - 000 781 97
1 x 20 W	–	12 VAC/DC	36° angle of illumination	959/1698 lx ¹	HSWK 20	112 081 012 - 000 781 99

* E_m = medium illuminance; E_{max} = maximum illuminance; ¹ Measuring range 30 cm x 30 cm / Measuring distance 50 cm
 Also available as an arm-mounted and flexible-tube luminaire